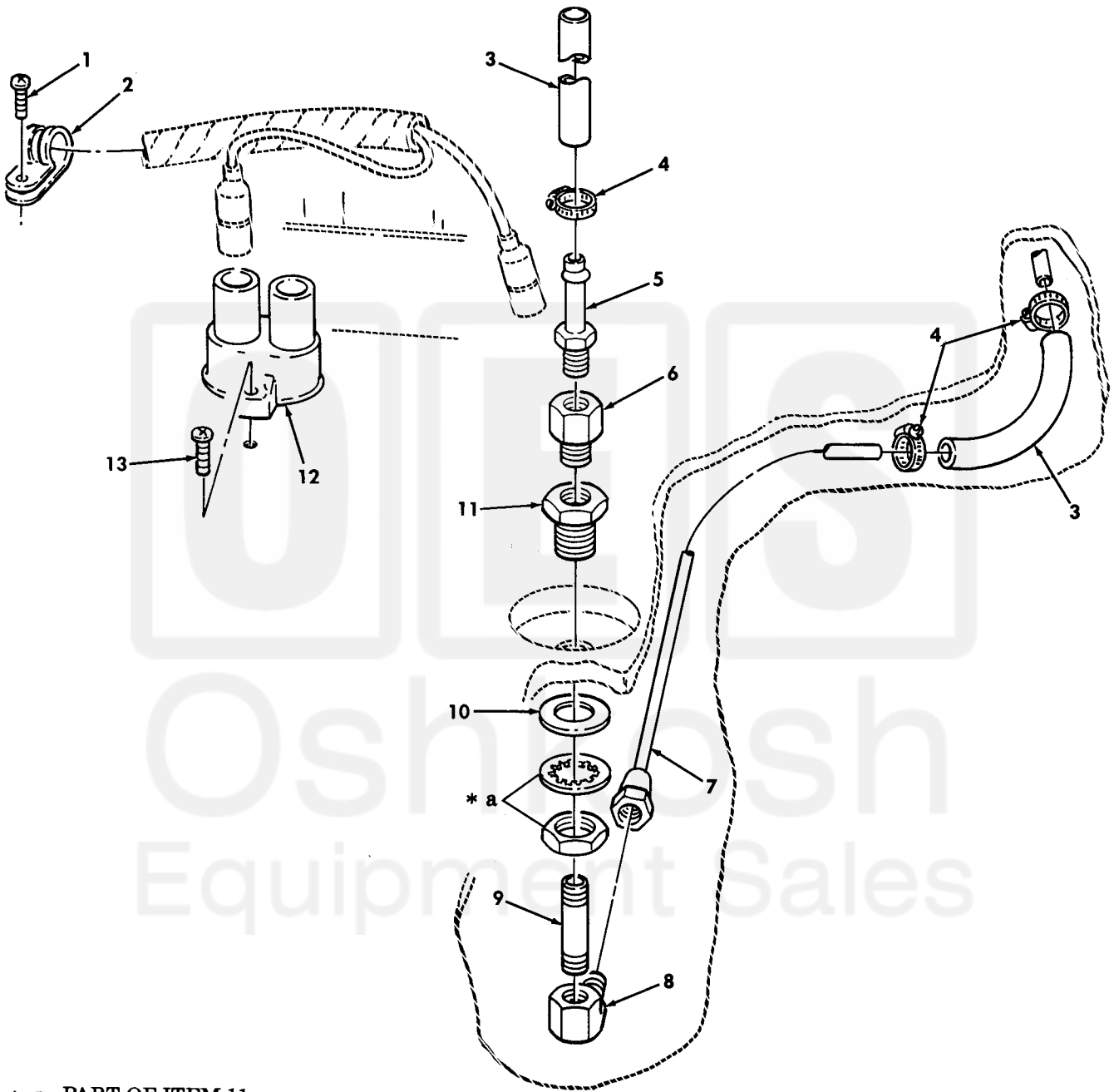


Section II.

TM 9-2320-280-24P-2



\* a PART OF ITEM 11

Figure 385. Fuel Pump Tube Assembly.

SECTION II			TM9-2320-280-24P C01			
(1)	(2)	(3)	(4)	(5)	(6)	(7)
ITEM	SMR			PART		
NO	CODE	NSN	CAGEC	NUMBER	DESCRIPTION AND USABLE ON CODES(UOC)	QTY
GROUP 3303 WINTERIZATION KITS						
FIG. 385 FUEL PUMP TUBE ASSEMBLY						
1	PAOZZ	5305000567879	96906	MS35493-74	SCREW,WOOD #10 X .50,PART OF KIT P/N 5705611.....	1
					UOC:A13,A14,H13,H14	
2	PAOZZ	5340009899222	96906	MS21333-74	CLAMP,LOOP PART OF KIT P/N 5705611.	1
					UOC:A13,A14,H13,H14	
*	MOOZZ		7X677	94383154-3	TUBE MAKE FROM HOSE,P/N G3336US-10, 7 INCHES LONG PART OF KIT P/N 5705611.....	2
					UOC:A13,A14,H13,H14	
4	PAOZZ	4730002782523	88907	B54-32780	CLAMP,LOOP PART OF KIT P/N 5705611.	3
					UOC:A13,A14,H13,H14	
5	PAOZZ	4730013576523	4A439	BN252	ADAPTER,ATRAIGHT,PI PART OF KIT P/N 5705611.....	1
					UOC:A13,A14,H13,H14	
6	PAOZZ	4730013477342	81343	4-4 130139C	COUPLING,PIPE PART OF KIT P/N 5705611.....	1
					UOC:A13,A14,H13,H14	
7	PAOZZ	4710013171045	34623	12342270	TUBE ASEMBLY,METAL PART OF KIT P/N 5705611.....	1
					UOC:A13,A14,H13,H14	
8	PFOZZ	4730012031025	81343	5010203CA	ELBOW,PIPE TO TUBE PART OF KIT P/N 5705611.....	1
					UOC:A13,A14,H13,H14	
9	PAOZZ	4730013153242	96906	MS51873-32	NIPPLE,PIPE PART OF KIT P/N 5705611	1
					UOC:A13,A14,H13,H14	
10	PAOZZ	5310008098533	96906	MS27183-23	WASHER,FLAT 1-1/2,PART OF KIT P/N 5705611.....	1
					UOC:A13,A14,H13,H14	
11	PAOZZ	4730008975497	79470	W21204	COUPLING,PIPE PART OF KIT P/N 5705611.....	1
					UOC:A13,A14,H13,H14	
12	PAOZZ	5925000264767	81349	M13516/1-1	CIRCUIT BREAKER PART OF KIT P/N 5705611.....	1
					UOC:A13,A14,H13,H14	
13	PAOZZ	5305009012134	96906	MS35493-55	SCREW,WOOD #8 X 1.00,PART OF KIT P/N 5705611.....	2
					UOC:A13,A14,H13,H14	

END OF FIGURE